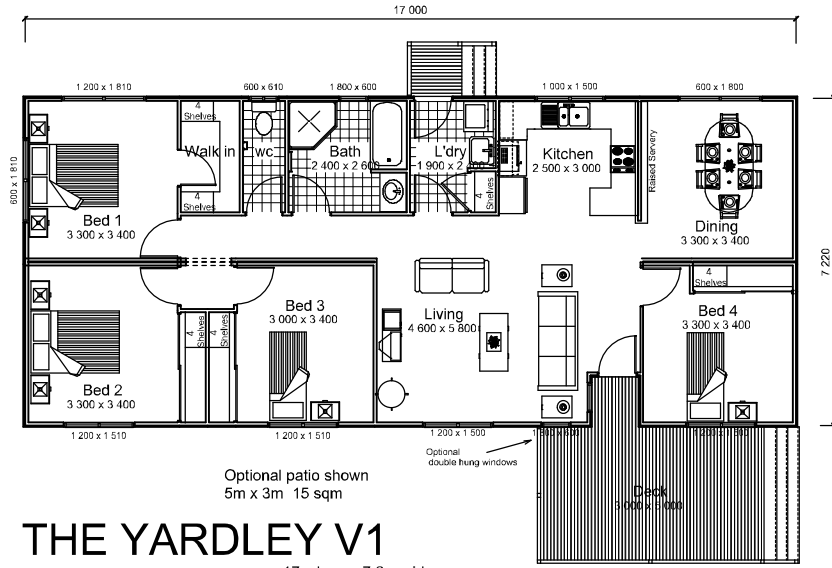


THE YARDLEY

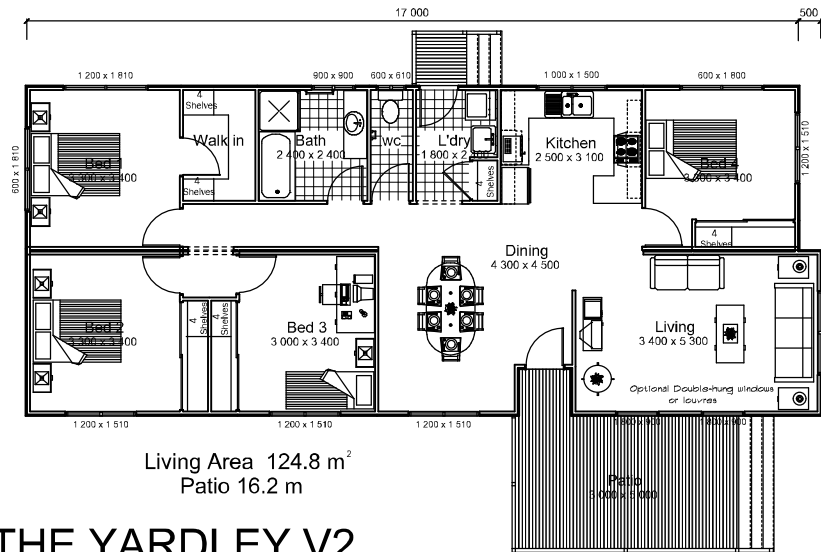
Optional patio shown
5m x 3m 15 sqm



THE YARDLEY V1

17m long x 7.2m wide

Living Area: 122.2 m²

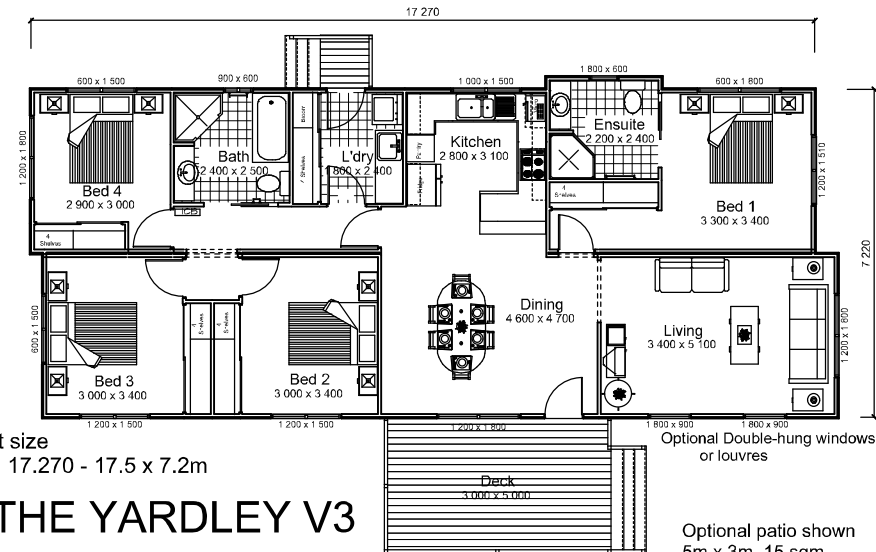


THE YARDLEY V2

Living Area 124.8 m²
Patio 16.2 m

Unit size 17 - 17.5 x 7.2m

Optional patio shown
5m x 3m 15 sqm



Unit size
17.270 - 17.5 x 7.2m

THE YARDLEY V3

Living Area
127.9 m²

Optional patio shown
5m x 3m 15 sqm



HOEK MODULAR HOMES

PO BOX 70 PETRIE QLD 4502 Phone: 3889 7385 Fax: 3889 7386

BSA LICENCE NO : 1169 135 Email: sales@hoekmodularhomes.com

Kitchens & Windows may
vary in Quote Plans

