

# Jasper 100

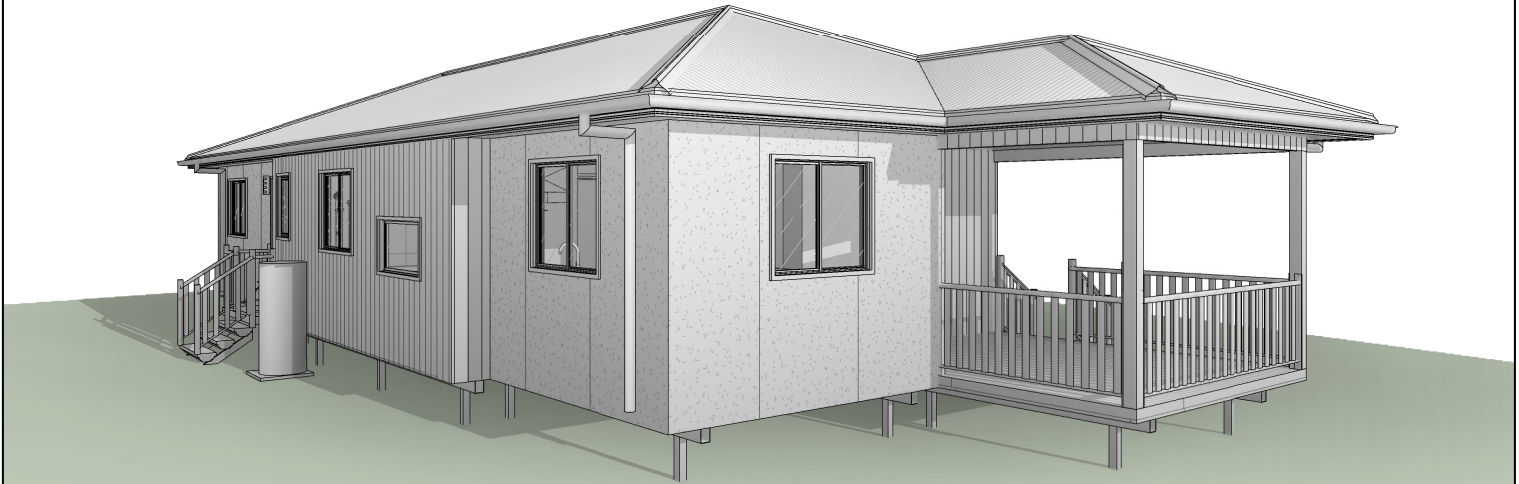
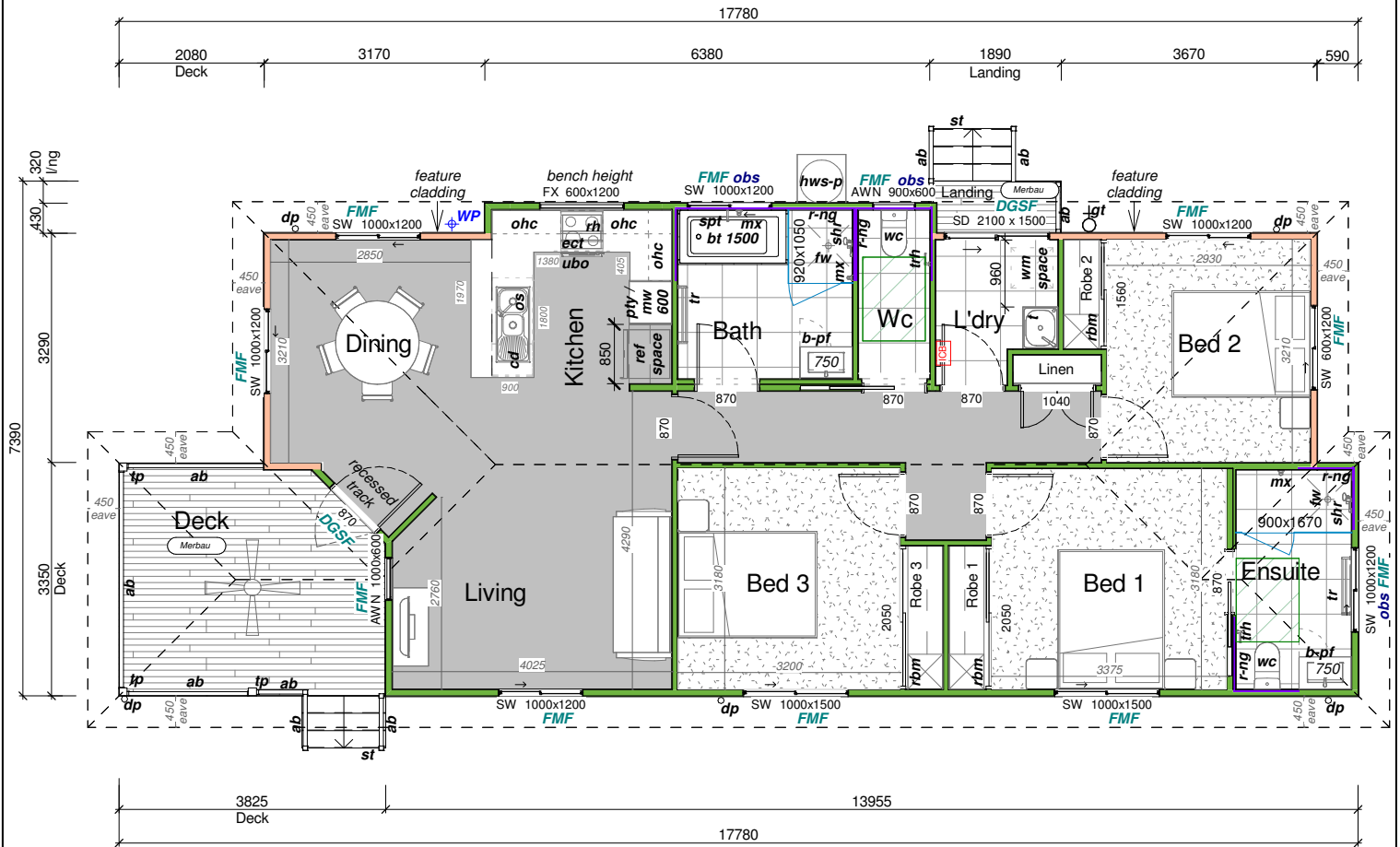


Illustration purposes only.



## SITE BUILD

Furniture shown for illustration purposes only.

August 2024

### AREA:

Living 100.0 m<sup>2</sup>

Deck 1 12.0 m<sup>2</sup>

Landing 1.4 m<sup>2</sup>

### HOEK MODULAR HOMES

6 LEANNE CRESENT, LAWNTON QLD 4501

Phone: 073889 7385

Email: sales@hoekmodularhomes.com

qbcc LICENCE NO: 1169 135



**HOEK  
MODULAR  
HOMES**